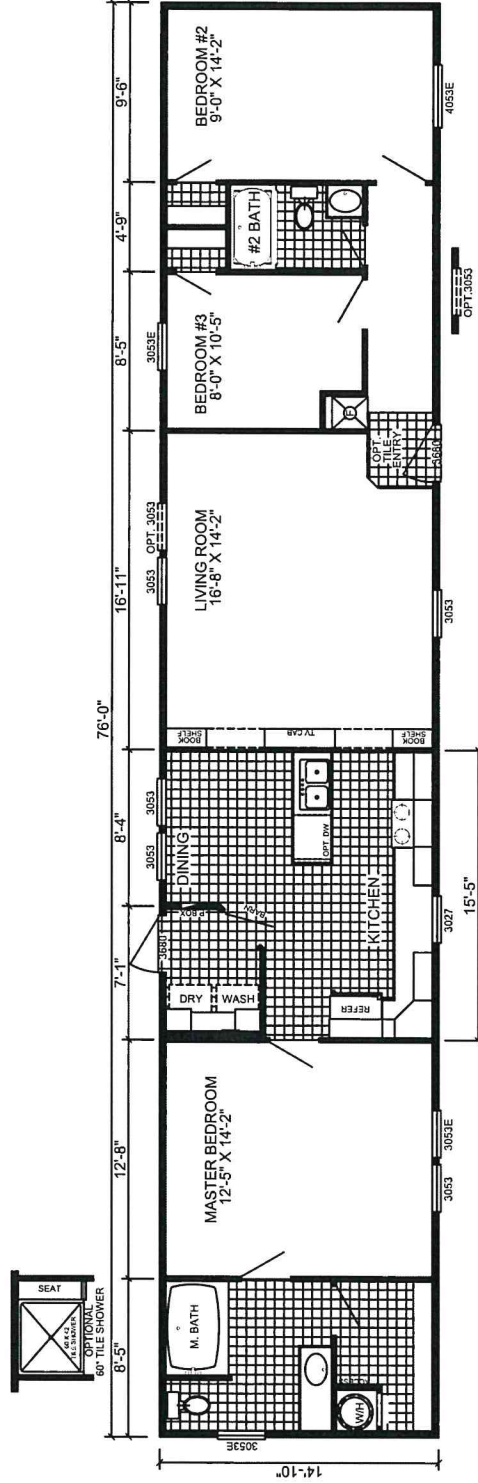
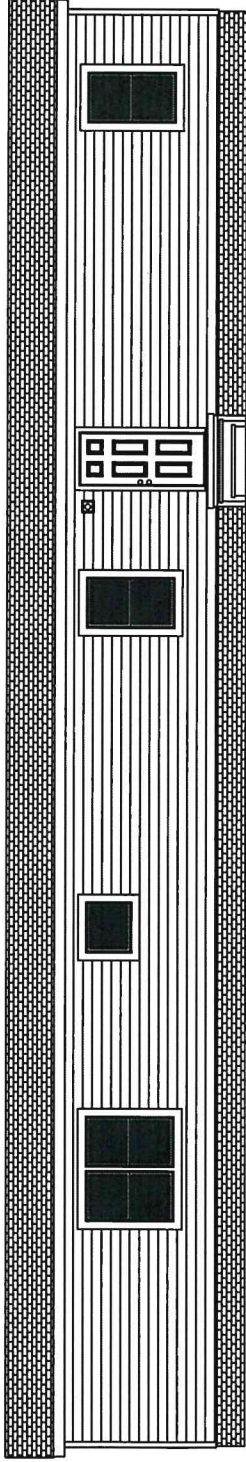


CAROLINA



OPTIONAL DORMER



S-5763L-SVS
3-BEDROOM / 2-BATH
16 X 80 - Approx. 1130 Sq. Ft.

4-6-2016
 * All room dimensions include closets and square footage figures are approximate.
 * Transom windows are available on optional 9'-0" sidewall houses only.
 * Available with Linoleum or Shutters around windows.