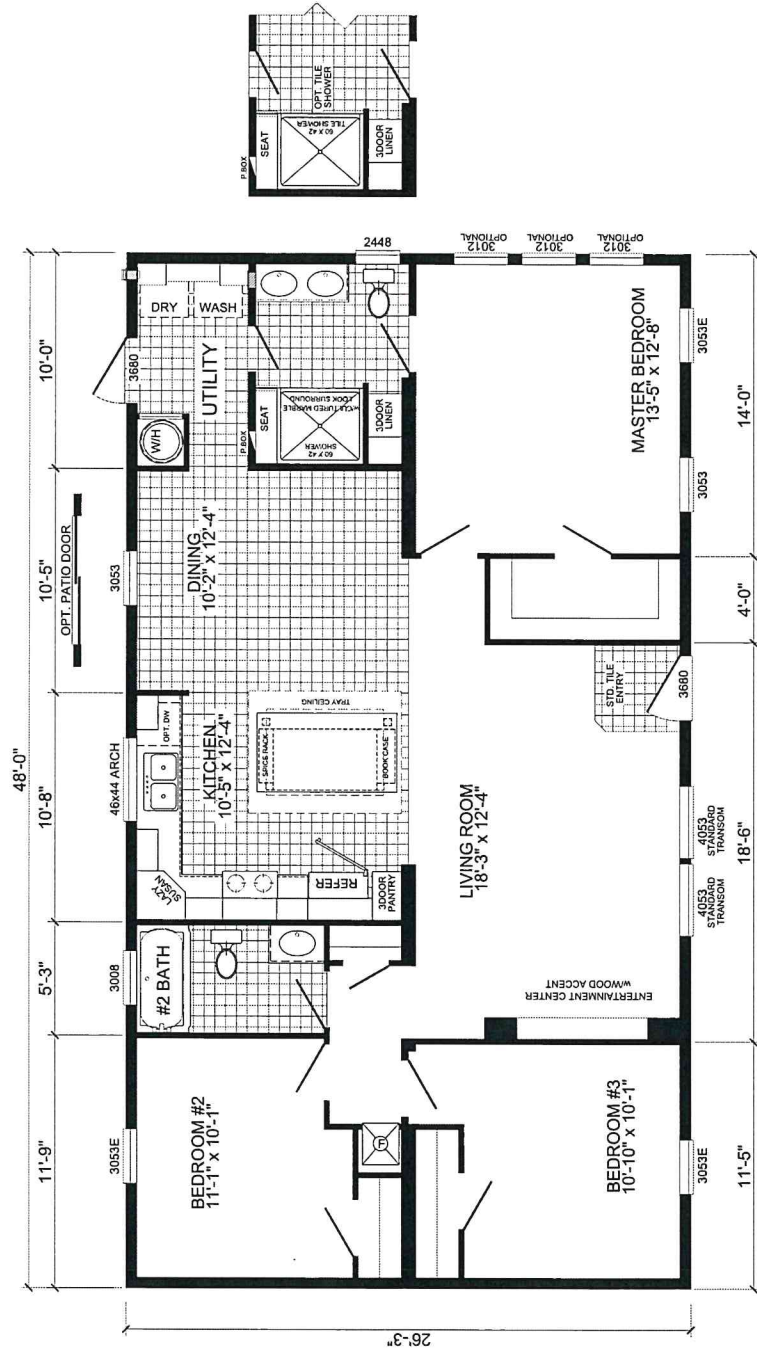
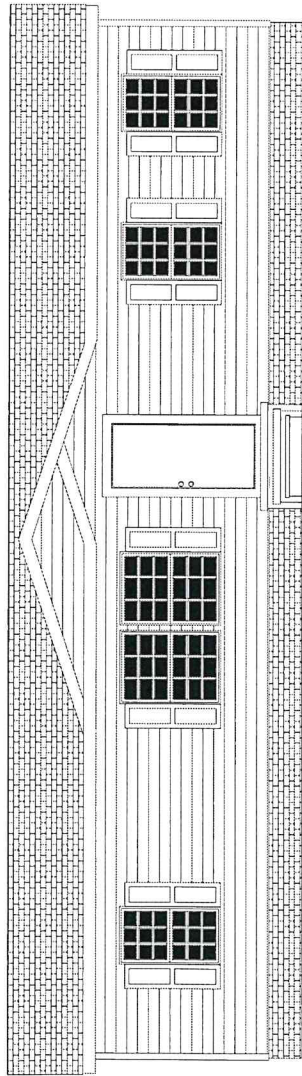


# WELLINGTON



**P-2483-J**  
**3-BEDROOM / 2-BATH**  
**28 x 52 - Approx. 1245 Sq. Ft.**

Date: 3-17-2016

- \* All room dimensions include closets and square footage figures are approximate.
- \* Transom windows are available on optional 9'-0" sidewall houses only.
- \*\* Overhead duct ONLY in this house.