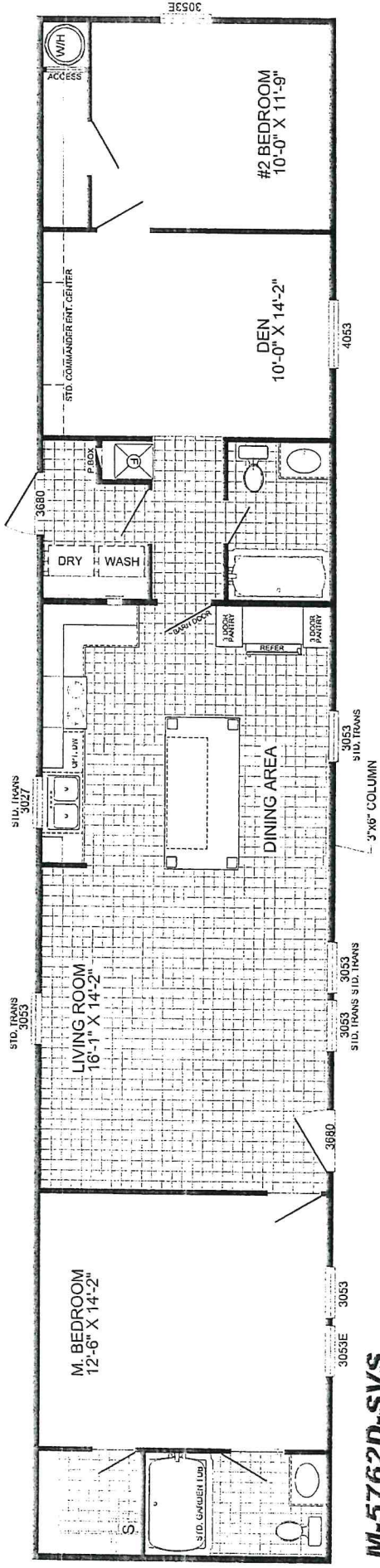
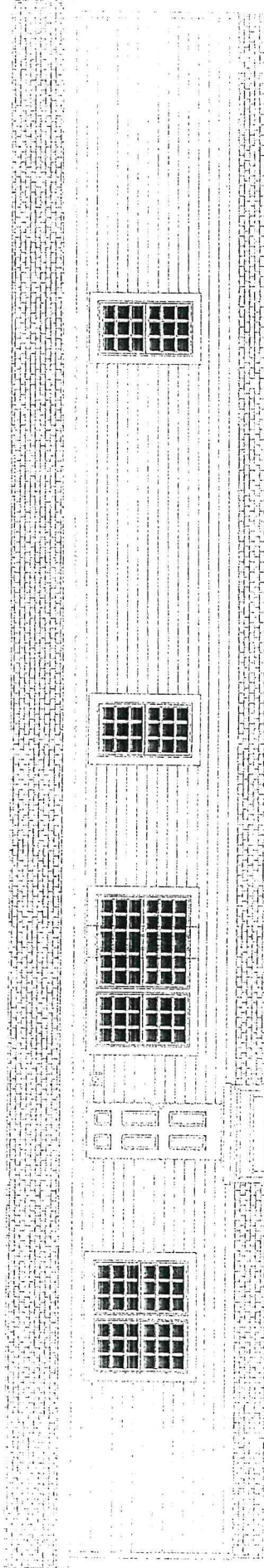


# CHEYENNE



**IM-5762D-SVS**  
**3-BEDROOM / 2-BATH**  
**16 X 80 - Approx. 1130 Sq. Ft.**

Date: 2-7-2017  
 \* All room dimensions include closets and square footage figures are approximate.  
 \* Transom windows are available on optional 9'-0" sidewall homes only.